

*Elevation Scheme 4*



**First Floor Brick Front  
w/Optional Partial Porch & Brick Tapered Columns**

*Elevation Scheme 2*



**First Floor Brick Front  
w/Optional Dormers & Clipped Hip Roof**

*The 2961 at  
Bridge-  
Pointe*  
**2,961 Square Feet**

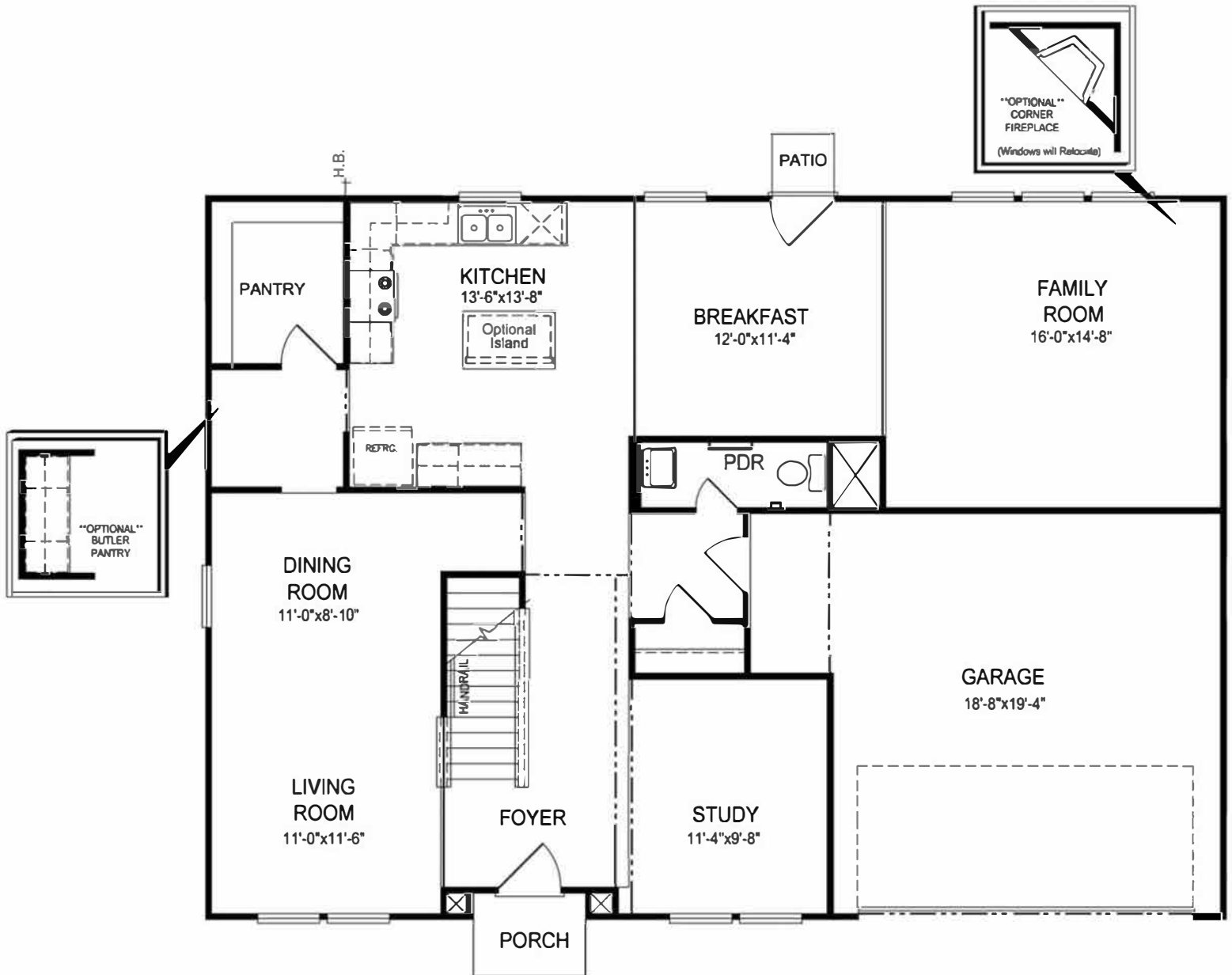
*Elevation Scheme 1*  
**Standard Elevation**

*Elevation Scheme 3*



**Stone Wainscot & Hip Roof  
w/Optional Partial Porch & Stone Tapered Columns**



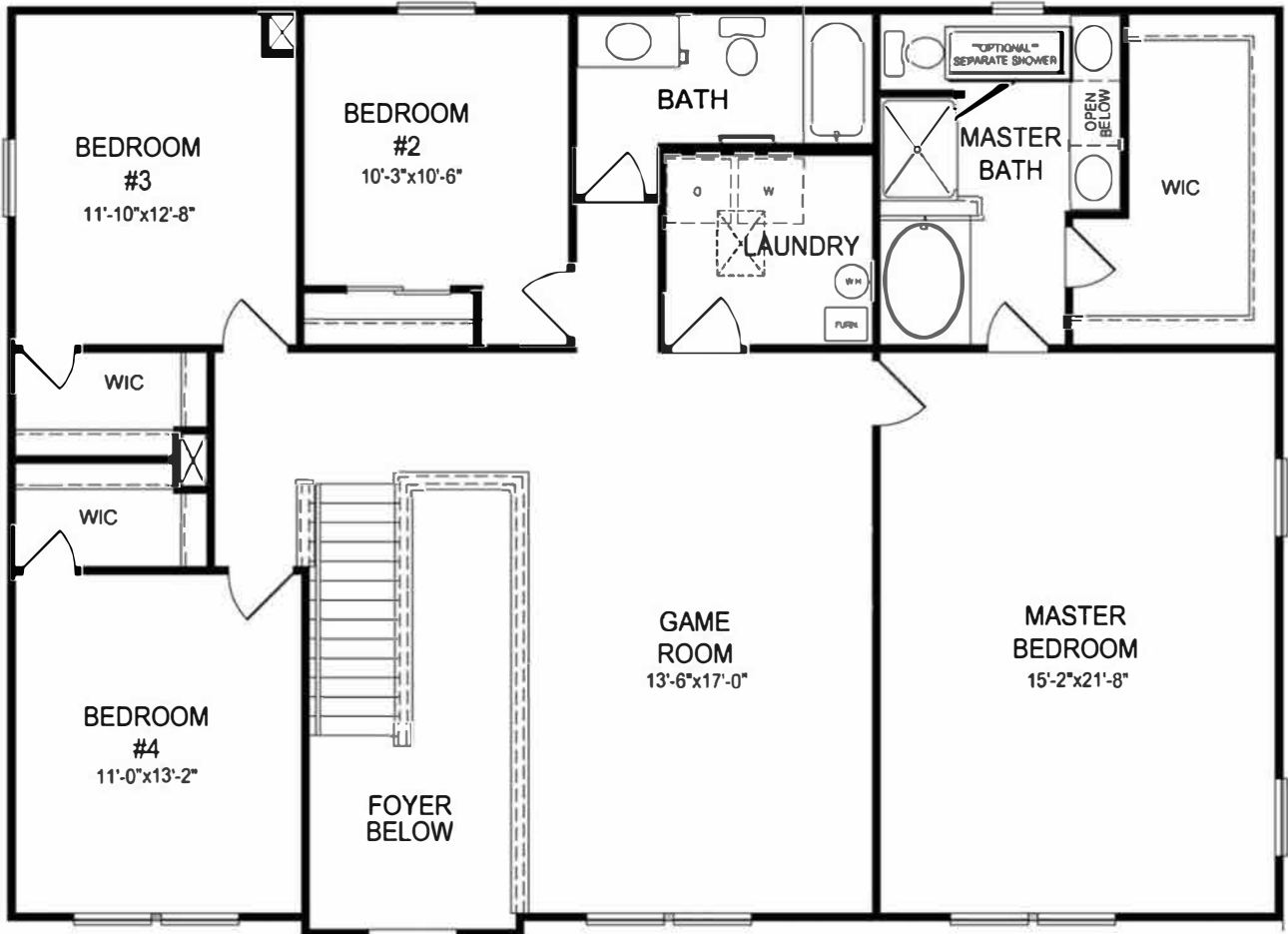


## First Floor

# 2961 at Bridge Point

Plan dimensions and square footage are approximate. Dimensions and square footage are based on architectural design and may vary by actual construction. Plans listed are subject to change without notice and plan availability may vary by lot. Ask your Sales Associate for details.

For more Information Contact Ronda Cooper (812)  
314-1112 or [info@beacon-builders.com](mailto:info@beacon-builders.com)

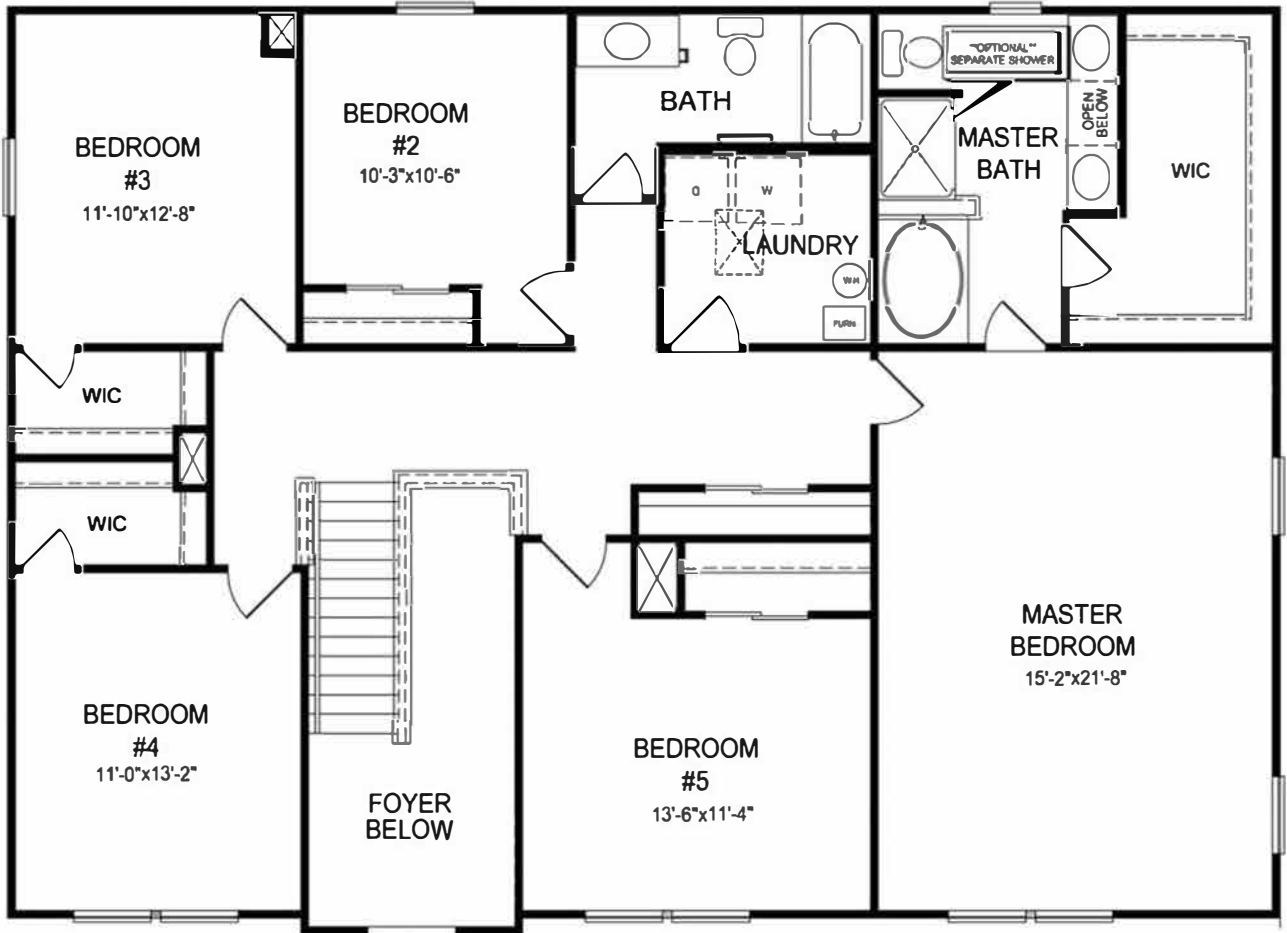


## Second Floor 4 Bedroom w/ Game Room

**2961 at Bridge Point**

Plan dimensions and square footage are approximate. Dimensions and square footage are based on architectural design and may vary by actual construction. Plans listed are subject to change without notice and plan availability may vary by lot. Ask your Sales Associate for details.

For more Information Contact Ronda Cooper (812)  
314-1112 or [info@beacon-builders.com](mailto:info@beacon-builders.com)



## Second Floor 5 Bedroom

**2961 at Bridge Point**

Plan dimensions and square footage are approximate. Dimensions and square footage are based on architectural design and may vary by actual construction. Plans listed are subject to change without notice and plan availability may vary by lot. Ask your Sales Associate for details.

For more Information Contact Ronda Cooper  
(812) 314-1112 or [info@beacon-builders.com](mailto:info@beacon-builders.com)